



[DBPR HOME](#) | [ABOUT DBPR](#) | [DBPR DIVISIONS](#) | [CONTACT DBPR](#)

[BCIS Home](#) | [Log In](#) | [User Registration](#) | [Hot Topics](#) | [Submit Surcharge](#) | [Stats & Facts](#) | [Publications](#) | [Contact Us](#) | [BCIS Site Map](#) | [Links](#) | [Search](#)



**Product Approval**  
USER: Public User

[Product Approval Menu](#) > [Product or Application Search](#) > [Application List](#) > **Application Detail**

OFFICE OF THE SECRETARY

| FL #   | FL16546-R20  |                 |             |                |      |                |      |
|--|--|-----------------|-------------|----------------|------|----------------|------|
| Application Type   | Revision   |                 |             |                |      |                |      |
| Code Version   | 2023   |                 |             |                |      |                |      |
| Application Status   | Approved   |                 |             |                |      |                |      |
| Comments   |  |                 |             |                |      |                |      |
| Archived   | <input type="checkbox"/>   |                 |             |                |      |                |      |
| Product Manufacturer   | Clopay Building Products Company   |                 |             |                |      |                |      |
| Address/Phone/Email  | 8585 Duke Blvd.<br>Mason, OH 45040<br>(513) 770-4641<br>jwheeler@clopay.com  |                 |             |                |      |                |      |
| Authorized Signature   | Jim Wheeler<br>jwheeler@clopay.com   |                 |             |                |      |                |      |
| Technical Representative   |  |                 |             |                |      |                |      |
| Address/Phone/Email  |  |                 |             |                |      |                |      |
| Quality Assurance Representative                                       |  |                 |             |                |      |                |      |
| Address/Phone/Email  |  |                 |             |                |      |                |      |
| Category   | Exterior Doors   |                 |             |                |      |                |      |
| Subcategory  | Sectional Exterior Door Assemblies   |                 |             |                |      |                |      |
| Compliance Method  | Evaluation Report from a Florida Registered Architect or a Licensed Florida Professional Engineer<br><input type="checkbox"/> Evaluation Report - Hardcopy Received  |                 |             |                |      |                |      |
| Florida Engineer or Architect Name who developed the Evaluation Report | James D. Wheeler   |                 |             |                |      |                |      |
| Florida License  | PE-91932   |                 |             |                |      |                |      |
| Quality Assurance Entity   | Intertek Testing Services NA, Inc. - QA Entity   |                 |             |                |      |                |      |
| Quality Assurance Contract Expiration Date                             | 12/31/2030   |                 |             |                |      |                |      |
| Validated By   | Gary Pfoehler<br><input checked="" type="checkbox"/> Validation Checklist - Hardcopy Received  |                 |             |                |      |                |      |
| Certificate of Independence  | <a href="#">FL16546_R20_COI_Certification_of_Independence_of_Validation_Entity-Gary_Pfoehler_2016-02-19.pdf</a><br><a href="#">FL16546_R20_COI_Statement_on_Independence_of_Evaluation_Entity-ScottHamilton_2016-02-19.pdf</a> |                 |             |                |      |                |      |
| Referenced Standard and Year (of Standard)                             | <table border="0"> <thead> <tr> <th><b>Standard</b></th> <th><b>Year</b></th> </tr> </thead> <tbody> <tr> <td>ANSI/DASMA 108</td> <td>2005</td> </tr> <tr> <td>ANSI/DASMA 115</td> <td>2005</td> </tr> </tbody> </table>       | <b>Standard</b> | <b>Year</b> | ANSI/DASMA 108 | 2005 | ANSI/DASMA 115 | 2005 |
| <b>Standard</b>  | <b>Year</b>  |                 |             |                |      |                |      |
| ANSI/DASMA 108   | 2005   |                 |             |                |      |                |      |
| ANSI/DASMA 115   | 2005   |                 |             |                |      |                |      |

|            |      |
|------------|------|
| ASTM E1886 | 2005 |
| ASTM E1996 | 2009 |
| ASTM E330  | 2002 |
| TAS 201    | 1994 |
| TAS 202    | 1994 |
| TAS 203    | 1994 |

Equivalence of Product Standards Certified By

Florida Licensed Professional Engineer or Architect  
[FL16546 R20 Equiv 20200812 - FBC - ASTM 1886-1996 equiv.pdf](#)  
[FL16546 R20 Equiv 20230712 - FBC - ASTM E330 equiv s.pdf](#)

Sections from the Code

Product Approval Method Method 1 Option D

Date Submitted 12/15/2025  
 Date Validated 12/15/2025  
 Date Pending FBC Approval 12/17/2025  
 Date Approved 02/10/2026

**Summary of Products**

Go to Page  

| FL #   | Model, Number or Name  | Description   |
|--|--|---|
| 16546.41   | 41 W8-09 DSIUA-1F477: 9208, 9209, HDPC2, HDPCR2, 7208, 7209, 3728, 3729, C7R20 // Canyon Ridge Modern Series / Glenmoor Modern Series / Custom Wood-Look Modern Series | Double-skin Insulated Intellicore (exterior skin 27 ga. min.; interior skin 27 ga. min.) Single-Car (up to 9'2" wide) WINDCODE® W8 Garage Door with Optional Impact-Resistant Lites   |
| <b>Limits of Use</b><br><b>Approved for use in HVHZ:</b> Yes<br><b>Approved for use outside HVHZ:</b> Yes<br><b>Impact Resistant:</b> Yes<br><b>Design Pressure:</b> +54 PSF/-62 PSF<br><b>Other:</b> Max. Wind Speed (V <sub>ult</sub> ): 170 MPH. Solid doors or doors with optional impact-resistant glazing are impact-resistant (large missile impact). |  | <b>Installation Instructions</b><br><a href="#">FL16546 R20 II 105024-Rev04.pdf</a><br>Verified By: James Wheeler FL PE 91932<br>Created by Independent Third Party: No<br><b>Evaluation Reports</b><br><a href="#">FL16546 R20 AE CBPC 160216-A-07.pdf</a><br>Created by Independent Third Party: No |
| 16546.42   | 42 W8-12 DSIUA-1F477: 9208, 9209, HDPC2, HDPCR2, 7208, 7209, 3728, 3729, C7R20 // Canyon Ridge Modern Series / Glenmoor Modern Series / Custom Wood-Look Modern Series | Double-skin Insulated Intellicore (exterior skin 27 ga. min.; interior skin 27 ga. min.) up to 12'2" wide WINDCODE® W8 Garage Door with Optional Impact-Resistant Lites   |
| <b>Limits of Use</b><br><b>Approved for use in HVHZ:</b> Yes<br><b>Approved for use outside HVHZ:</b> Yes<br><b>Impact Resistant:</b> Yes<br><b>Design Pressure:</b> +50 PSF/-56 PSF<br><b>Other:</b> Max. Wind Speed (V <sub>ult</sub> ): 170 MPH. Solid doors or doors with optional impact-resistant glazing are impact-resistant (large missile impact). |  | <b>Installation Instructions</b><br><a href="#">FL16546 R20 II 105050-Rev04.pdf</a><br>Verified By: James Wheeler FL PE 91932<br>Created by Independent Third Party: No<br><b>Evaluation Reports</b><br><a href="#">FL16546 R20 AE CBPC 160216-A-07.pdf</a><br>Created by Independent Third Party: No |
| 16546.43   | 43 W8-14 DSIUA-1F477: 9208, 9209, HDPC2, HDPCR2, 7208, 7209, 3728, 3729, C7R20 // Canyon Ridge Modern Series / Glenmoor Modern Series / Custom Wood-Look Modern Series | Double-skin Insulated Intellicore (exterior skin 27 ga. min.; interior skin 27 ga. min.) up to 14'2" wide WINDCODE® W8 Garage Door with Optional Impact-Resistant Lites   |

|                 |  |   |
|-----------------|--|---|
|                 | <p><b>Limits of Use</b><br/> <b>Approved for use in HVHZ:</b> Yes<br/> <b>Approved for use outside HVHZ:</b> Yes<br/> <b>Impact Resistant:</b> Yes<br/> <b>Design Pressure:</b> +46 PSF/-52 PSF<br/> <b>Other:</b> Max. Wind Speed (V<sub>ult</sub>): 170 MPH. Solid doors or doors with optional impact-resistant glazing are impact-resistant (large missile impact).</p>          | <p><b>Installation Instructions</b><br/> <a href="#">FL16546 R20 II 105019-Rev04.pdf</a><br/>                 Verified By: James Wheeler FL PE 91932<br/>                 Created by Independent Third Party: No<br/> <b>Evaluation Reports</b><br/> <a href="#">FL16546 R20 AE CBPC 160216-A-07.pdf</a><br/>                 Created by Independent Third Party: No</p>      |
| <p>16546.44</p> | <p>44 W8-16 DSIUA-1F477: 9208, 9209, HDPCC2, HDPCR2, 7208, 7209, 3728, 3729, C7R20 // Canyon Ridge Modern Series / Glenmoor Modern Series / Custom Wood-Look Modern Series</p>   | <p>Double-skin Insulated Intellicore (exterior skin 27 ga. min.; interior skin 27 ga. min.) up to 16'2" wide WINDCODE® W8 Garage Door with Optional Impact-Resistant Lites</p>  |
|                 | <p><b>Limits of Use</b><br/> <b>Approved for use in HVHZ:</b> Yes<br/> <b>Approved for use outside HVHZ:</b> Yes<br/> <b>Impact Resistant:</b> Yes<br/> <b>Design Pressure:</b> +46 PSF/-52 PSF<br/> <b>Other:</b> Max. Wind Speed (V<sub>ult</sub>): 170 MPH. Solid doors or doors with optional impact-resistant glazing are impact-resistant (large missile impact).</p>          | <p><b>Installation Instructions</b><br/> <a href="#">FL16546 R20 II 105002-Rev04.pdf</a><br/>                 Verified By: James Wheeler FL PE 91932<br/>                 Created by Independent Third Party: No<br/> <b>Evaluation Reports</b><br/> <a href="#">FL16546 R20 AE CBPC 160216-A-07.pdf</a><br/>                 Created by Independent Third Party: No</p>      |
| <p>16546.45</p> | <p>45 W6-20 DSIE-1F171: 4300, 4301, 4310, HDG, HDGL, HDGF, 66, 66G, 67, 67G, 68, SP200, SF200, SE200, 6200, 6201, 6203</p>   | <p>Double-skin Insulated EPS (exterior skin 27 ga. min.; interior skin 27 ga. min.) up to 20'2" wide WINDCODE® W6 Garage Door with Optional Impact-Resistant Lites</p>  |
|                 | <p><b>Limits of Use</b><br/> <b>Approved for use in HVHZ:</b> Yes<br/> <b>Approved for use outside HVHZ:</b> Yes<br/> <b>Impact Resistant:</b> Yes<br/> <b>Design Pressure:</b> +37 PSF/-40 PSF<br/> <b>Other:</b> Max. Wind Speed (V<sub>ult</sub>): 170 MPH. Solid doors or doors with optional impact-resistant glazing are impact-resistant (large missile impact).</p>          | <p><b>Installation Instructions</b><br/> <a href="#">FL16546 R20 II 104943-A-Rev02.pdf</a><br/>                 Verified By: James D. Wheeler FL PE 91932<br/>                 Created by Independent Third Party: No<br/> <b>Evaluation Reports</b><br/> <a href="#">FL16546 R20 AE CBPC 160216-A-07.pdf</a><br/>                 Created by Independent Third Party: No</p> |
| <p>16546.46</p> | <p>46 W6-20 DSIE-1F171: 4300, 4301, 4310, HDG, HDGL, HDGF, 66, 66G, 67, 67G, 68, SP200, SF200, SE200, 6200, 6201, 6203</p>   | <p>Double-skin Insulated EPS (exterior skin 27 ga. min.; interior skin 27 ga. min.) up to 20'2" wide WINDCODE® W6 Garage Door</p>   |
|                 | <p><b>Limits of Use</b><br/> <b>Approved for use in HVHZ:</b> No<br/> <b>Approved for use outside HVHZ:</b> Yes<br/> <b>Impact Resistant:</b> No<br/> <b>Design Pressure:</b> +37 PSF/-40 PSF<br/> <b>Other:</b> Doors with standard glazing meet the wind load requirements of the building code but DO NOT meet the impact resistant requirement for windborne debris regions.</p> | <p><b>Installation Instructions</b><br/> <a href="#">FL16546 R20 II 104943-B-Rev02.pdf</a><br/>                 Verified By: James D. Wheeler FL PE 91932<br/>                 Created by Independent Third Party: No<br/> <b>Evaluation Reports</b><br/> <a href="#">FL16546 R20 AE CBPC 160216-A-07.pdf</a><br/>                 Created by Independent Third Party: No</p> |
| <p>16546.47</p> | <p>47 W5-18 W-1B899: Reserve Collection RHxx</p>   | <p>Reserve Wood Double-Car (9'2" To 18'0" wide) WINDCODE® W5 Garage Door</p>  |
|                 | <p><b>Limits of Use</b><br/> <b>Approved for use in HVHZ:</b> No<br/> <b>Approved for use outside HVHZ:</b> Yes<br/> <b>Impact Resistant:</b> No<br/> <b>Design Pressure:</b> +32 PSF/-36 PSF<br/> <b>Other:</b> Doors with standard glazing meet the wind load requirements of the building code but DO NOT meet the impact resistant requirement for windborne debris regions.</p> | <p><b>Installation Instructions</b><br/> <a href="#">FL16546 R20 II 105116-Rev02 s.pdf</a><br/>                 Verified By: Scott Hamilton FL PE 63286<br/>                 Created by Independent Third Party: No<br/> <b>Evaluation Reports</b><br/> <a href="#">FL16546 R20 AE CBPC 131211-A.pdf</a><br/>                 Created by Independent Third Party: No</p>      |
| <p>16546.48</p> | <p>48 W5-20 PAN-2F143: 84A, 94, 4F, 4RST, 4RSF, 48, 48B</p>  | <p>Steel Pan (min. 24 ga.) Double-Car (16'2" to 20'2" wide) WINDCODE® W5 Garage Door</p>  |
|                 | <p><b>Limits of Use</b><br/> <b>Approved for use in HVHZ:</b> No<br/> <b>Approved for use outside HVHZ:</b> Yes<br/> <b>Impact Resistant:</b> N/A<br/> <b>Design Pressure:</b> +30 PSF/-32 PSF<br/> <b>Other:</b> Doors with standard glazing meet the wind load</p>   | <p><b>Installation Instructions</b><br/> <a href="#">FL16546 R20 II 105101-Rev02 s.pdf</a><br/>                 Verified By: Scott Hamilton FL PE 63286<br/>                 Created by Independent Third Party: No<br/> <b>Evaluation Reports</b><br/> <a href="#">FL16546 R20 AE CBPC 131211-A.pdf</a></p>  |

|  |  |  |
|--|--|--|
|  | requirements of the building code but DO NOT meet the impact resistant requirement for windborne debris regions. | Created by Independent Third Party: No   |
| 16546.49   | 49 W8-09 SPO-2F449: Grand Harbor, Evanston, Stone Manor  | Steel Pan (min. 24 ga.) with Overlay Single-Car (up to 9'0" wide) WINDCODE® W8 Garage Door   |
| <b>Limits of Use</b><br><b>Approved for use in HVHZ:</b> Yes<br><b>Approved for use outside HVHZ:</b> Yes<br><b>Impact Resistant:</b> Yes<br><b>Design Pressure:</b> +50 PSF/-58 PSF<br><b>Other:</b> Max. Wind Speed (V <sub>ult</sub> ): 170 MPH. Solid doors (no glazing) are impact-resistant (large missile impact).  |  | <b>Installation Instructions</b><br><a href="#">FL16546 R20 II 104121-Rev08.pdf</a><br>Verified By: James Wheeler FL PE 91932<br>Created by Independent Third Party: No<br><b>Evaluation Reports</b><br><a href="#">FL16546 R20 AE CBPC 131211-A-14.pdf</a><br>Created by Independent Third Party: No      |
| 16546.50   | 50 W8-16 SPO-2F499: Grand Harbor, Evanston, Stone Manor  | Steel Pan (min. 24 ga.) with Overlay Double-Car (9'2" to 16'2" wide) WINDCODE® W8 Garage Door  |
| <b>Limits of Use</b><br><b>Approved for use in HVHZ:</b> Yes<br><b>Approved for use outside HVHZ:</b> Yes<br><b>Impact Resistant:</b> Yes<br><b>Design Pressure:</b> +46 PSF/-52 PSF<br><b>Other:</b> Max. Wind Speed (V <sub>ult</sub> ): 170 MPH. Solid doors (no glazing) are impact-resistant (large missile impact).  |  | <b>Installation Instructions</b><br><a href="#">FL16546 R20 II 104791-Rev08.pdf</a><br>Verified By: James Wheeler FL PE 91932<br>Created by Independent Third Party: No<br><b>Evaluation Reports</b><br><a href="#">FL16546 R20 AE CBPC 131211-A-14.pdf</a><br>Created by Independent Third Party: No      |
| 16546.51   | 51 W4-18 PAN-2F443: GD4S, GR4S, ED4S, AR4S   | Gallery/Artistry/Expressions: Steel Pan (min. 24 ga.) 16'2" to 18'0" wide WINDCODE® W4 Garage Door   |
| <b>Limits of Use</b><br><b>Approved for use in HVHZ:</b> No<br><b>Approved for use outside HVHZ:</b> Yes<br><b>Impact Resistant:</b> No<br><b>Design Pressure:</b> +25 PSF/-25 PSF<br><b>Other:</b> The product without glazing DOES comply with the impact resistant requirement for windborne debris regions (ref 1609.1.2 FBC).                                   |  | <b>Installation Instructions</b><br><a href="#">FL16546 R20 II 105109-A-Rev03.pdf</a><br>Verified By: Scott Hamilton FL PE 63286<br>Created by Independent Third Party: No<br><b>Evaluation Reports</b><br><a href="#">FL16546 R20 AE CBPC 131211-A.pdf</a><br>Created by Independent Third Party: No      |
| 16546.52   | 52 W4-18 PAN-2F443: GD4S, GR4S, ED4S, AR4S   | Gallery/Artistry/Expressions: Steel Pan (min. 24 ga.) 16'2" to 18'0" wide WINDCODE® W4 Garage Door   |
| <b>Limits of Use</b><br><b>Approved for use in HVHZ:</b> No<br><b>Approved for use outside HVHZ:</b> Yes<br><b>Impact Resistant:</b> Yes<br><b>Design Pressure:</b> +25 PSF/-25 PSF<br><b>Other:</b> Doors with standard glazing meet the wind load requirements of the building code but DO NOT meet the impact resistant requirement for windborne debris regions. |  | <b>Installation Instructions</b><br><a href="#">FL16546 R20 II 105109-B-Rev03.pdf</a><br>Verified By: Scott Hamilton FL PE 63286<br>Created by Independent Third Party: No<br><b>Evaluation Reports</b><br><a href="#">FL16546 R20 AE CBPC 131211-A.pdf</a><br>Created by Independent Third Party: No      |
| 16546.53   | 53 W4-18 PAN-2F446: GD4L, GR4L, ED4L, AR4L, BD4E, BR4E, PR4E, RR4E, BD4N, BR4N, PR4N, RR4N, BD4C, BR4C, PR4C     | Gallery/Artistry/Expressions // Bridgeport/Westport/Recessed: Steel Pan (min. 24 ga.) 16'2" to 18'0" wide WINDCODE® W4 Garage Door   |
| <b>Limits of Use</b><br><b>Approved for use in HVHZ:</b> No<br><b>Approved for use outside HVHZ:</b> Yes<br><b>Impact Resistant:</b> Yes<br><b>Design Pressure:</b> +25 PSF/-25 PSF<br><b>Other:</b> The product without glazing DOES comply with the impact resistant requirement for windborne debris regions (ref 1609.1.2 FBC).                                  |  | <b>Installation Instructions</b><br><a href="#">FL16546 R20 II 105109-A-Rev05.pdf</a><br>Verified By: James D. Wheeler FL PE 91932<br>Created by Independent Third Party: No<br><b>Evaluation Reports</b><br><a href="#">FL16546 R20 AE CBPC 131211-A-15.pdf</a><br>Created by Independent Third Party: No |
| 16546.54   | 54 W4-18 PAN-2F446: GD4L, GR4L, ED4L, AR4L, BD4E, BR4E, PR4E, RR4E, BD4N, BR4N, PR4N, RR4N, BD4C, BR4C, PR4C     | Gallery/Artistry/Expressions // Bridgeport/Westport/Recessed: Steel Pan (min. 24 ga.) 16'2" to 18'0" wide WINDCODE® W4 Garage Door   |
| <b>Limits of Use</b><br><b>Approved for use in HVHZ:</b> No<br><b>Approved for use outside HVHZ:</b> Yes<br><b>Impact Resistant:</b> N/A<br><b>Design Pressure:</b> +25 PSF/-25 PSF<br><b>Other:</b> Doors with standard glazing meet the wind load requirements of the building code but DO NOT meet the  |  | <b>Installation Instructions</b><br><a href="#">FL16546 R20 II 105109-B-Rev05.pdf</a><br>Verified By: James D. Wheeler FL PE 91932<br>Created by Independent Third Party: No<br><b>Evaluation Reports</b><br><a href="#">FL16546 R20 AE CBPC 131211-A-15.pdf</a><br>Created by Independent Third Party: No |

|   |  |  |
|---|--|--|
| impact resistant requirement for windborne debris regions.  |  |  |
| 16546.55  | 55 W6-18 DSIUA-1F477: 9208, 9209, HDPC2, HDPCR2, 7208, 7209, 3728, 3729, C7R20 // Canyon Ridge Modern Series / Glenmoor Modern Series / Custom Wood-Look Modern Series                     | Double-skin Insulated Intellicore (exterior skin 27 ga. min.; interior skin 27 ga. min.) Double-Car (up to 18'2" wide) WINDCODE® W6 Garage Door  |
| <b>Limits of Use</b><br><b>Approved for use in HVHZ:</b> Yes<br><b>Approved for use outside HVHZ:</b> Yes<br><b>Impact Resistant:</b> Yes<br><b>Design Pressure:</b> +38 PSF/-42 PSF<br><b>Other:</b> Max. Wind Speed (V <sub>ult</sub> ): 170 MPH. Solid doors or doors with optional impact-resistant glazing are impact-resistant (large missile impact).        |  | <b>Installation Instructions</b><br><a href="#">FL16546 R20 II 105188-A-Rev03.pdf</a><br>Verified By: James Wheeler FL PE 91932<br>Created by Independent Third Party: No<br><b>Evaluation Reports</b><br><a href="#">FL16546 R20 AE CBPC 160216-A-07.pdf</a><br>Created by Independent Third Party: No    |
| 16546.56  | 56 W6-18 DSIUA-1F477: 9208, 9209, HDPC2, HDPCR2, 7208, 7209, 3728, 3729, C7R20 // Canyon Ridge Modern Series / Glenmoor Modern Series / Custom Wood-Look Modern Series                     | Double-skin Insulated Intellicore (exterior skin 27 ga. min.; interior skin 27 ga. min.) Double-Car (up to 16'2" wide) WINDCODE® W6 Garage Door  |
| <b>Limits of Use</b><br><b>Approved for use in HVHZ:</b> No<br><b>Approved for use outside HVHZ:</b> Yes<br><b>Impact Resistant:</b> No<br><b>Design Pressure:</b> +38 PSF/-42 PSF<br><b>Other:</b> Doors with standard glazing meet the wind load requirements of the building code but DO NOT meet the impact resistant requirement for windborne debris regions. |  | <b>Installation Instructions</b><br><a href="#">FL16546 R20 II 105188-B-Rev02.pdf</a><br>Verified By: James D. Wheeler FL PE 91932<br>Created by Independent Third Party: No<br><b>Evaluation Reports</b><br><a href="#">FL16546 R20 AE CBPC 160216-A-07.pdf</a><br>Created by Independent Third Party: No |
| 16546.57  | 57 W6-10 DSIUO-1K749: Canyon Ridge / Glenmoor / Custom Wood-Look // Canyon Ridge Modern Series / Glenmoor Modern Series / Custom Wood-Look Modern Series // Coachman / Settlers / Affinity | Double Skin Insulated Intellicore (exterior skin 27 ga. min.; interior skin 27ga. min.) with Overlay Single-Car (9'2" to 10'0" wide) WINDCODE® W6 Garage Door with optional Impact-Resistant Lites   |
| <b>Limits of Use</b><br><b>Approved for use in HVHZ:</b> Yes<br><b>Approved for use outside HVHZ:</b> Yes<br><b>Impact Resistant:</b> Yes<br><b>Design Pressure:</b> +38 PSF/-44 PSF<br><b>Other:</b> Max. Wind Speed (V <sub>ult</sub> ): 170 MPH. Solid doors or doors with optional impact-resistant glazing are impact-resistant (large missile impact).        |  | <b>Installation Instructions</b><br><a href="#">FL16546 R20 II 105421-A-Rev01.pdf</a><br>Verified By: Scott Hamilton FL PE 63286<br>Created by Independent Third Party: No<br><b>Evaluation Reports</b><br><a href="#">FL16546 R20 AE CBPC 141219-B.pdf</a><br>Created by Independent Third Party: No      |
| 16546.58  | 58 W6-10 DSIUO-1K749: Canyon Ridge / Glenmoor / Custom Wood-Look // Canyon Ridge Modern Series / Glenmoor Modern Series / Custom Wood-Look Modern Series // Coachman / Settlers / Affinity | Double Skin Insulated Intellicore (exterior skin 27 ga. min.; interior skin 27ga. min.) with Overlay Single-Car (9'2" to 10'0" wide) WINDCODE® W6 Garage Door  |
| <b>Limits of Use</b><br><b>Approved for use in HVHZ:</b> No<br><b>Approved for use outside HVHZ:</b> Yes<br><b>Impact Resistant:</b> No<br><b>Design Pressure:</b> +38 PSF/-44 PSF<br><b>Other:</b> Doors with standard glazing meet the wind load requirements of the building code but DO NOT meet the impact resistant requirement for windborne debris regions. |  | <b>Installation Instructions</b><br><a href="#">FL16546 R20 II 105421-B-Rev01.pdf</a><br>Verified By: Scott Hamilton FL PE 63286<br>Created by Independent Third Party: No<br><b>Evaluation Reports</b><br><a href="#">FL16546 R20 AE CBPC 141219-B.pdf</a><br>Created by Independent Third Party: No      |
| 16546.59  | 59 W8-10 DSIUO-1K749: Canyon Ridge / Glenmoor / Custom Wood-Look // Canyon Ridge Modern Series / Glenmoor Modern Series / Custom Wood-Look Modern Series // Coachman / Settlers / Affinity | Double Skin Insulated Intellicore (exterior skin 27 ga. min.; interior skin 27ga. min.) with Overlay Single-Car (9'2" to 10'0" wide) WINDCODE® W8 Garage Door with optional Impact-Resistant Lites   |
| <b>Limits of Use</b>  |  | <b>Installation Instructions</b>   |

|   |                         |  |
|---|-------------------------|--|
| <p><b>Approved for use in HVHZ:</b> Yes<br/> <b>Approved for use outside HVHZ:</b> Yes<br/> <b>Impact Resistant:</b> Yes<br/> <b>Design Pressure:</b> +54 PSF/-60 PSF<br/> <b>Other:</b> Max. Wind Speed (V<sub>ult</sub>): 170 MPH. Solid doors or doors with optional impact-resistant glazing are impact-resistant (large missile impact).</p>                                     |                         | <p><a href="#">FL16546 R20 II 105391-Rev01.pdf</a><br/>                 Verified By: Scott Hamilton FL PE 63286<br/>                 Created by Independent Third Party: No<br/> <b>Evaluation Reports</b><br/> <a href="#">FL16546 R20 AE CBPC 141219-B.pdf</a><br/>                 Created by Independent Third Party: No</p>   |
| 16546.60  | 60 W4-16 PAN-2F441: 4F4 | Modern Steel: Steel Pan (min. 24 ga.) 9'2" to 16'0" wide WINDCODE® W4 Garage Door  |
| <p><b>Limits of Use</b><br/> <b>Approved for use in HVHZ:</b> No<br/> <b>Approved for use outside HVHZ:</b> Yes<br/> <b>Impact Resistant:</b> N/A<br/> <b>Design Pressure:</b> +25 PSF/-25 PSF<br/> <b>Other:</b> Doors with standard glazing meet the wind load requirements of the building code but DO NOT meet the impact resistant requirement for windborne debris regions.</p> |                         | <p><b>Installation Instructions</b><br/> <a href="#">FL16546 R20 II 105430-Rev02 s.pdf</a><br/>                 Verified By: Scott Hamilton FL PE 63286<br/>                 Created by Independent Third Party: No<br/> <b>Evaluation Reports</b><br/> <a href="#">FL16546 R20 AE CBPC 131211-A.pdf</a><br/>                 Created by Independent Third Party: No</p> |

Go to Page

Page 3 / 5

[Back](#) [Next](#)

[Contact Us](#) :: 2601 Blair Stone Road, Tallahassee FL 32399 Phone: 850-487-1824

The State of Florida is an AA/EEO employer. [Copyright 2007-2013 State of Florida.](#) :: [Privacy Statement](#) :: [Accessibility Statement](#) :: [Refund Statement](#)

Under Florida law, email addresses are public records. If you do not want your e-mail address released in response to a public-records request, do not send electronic mail to this entity. Instead, contact the office by phone or by traditional mail. If you have any questions, please contact 850.487.1395. \*Pursuant to Section 455.275(1), Florida Statutes, effective October 1, 2012, licensees licensed under Chapter 455, F.S. must provide the Department with an email address if they have one. The emails provided may be used for official communication with the licensee. However email addresses are public record. If you do not wish to supply a personal address, please provide the Department with an email address which can be made available to the public. To determine if you are a licensee under Chapter 455, F.S., please click [here](#).

**Product Approval Accepts:**

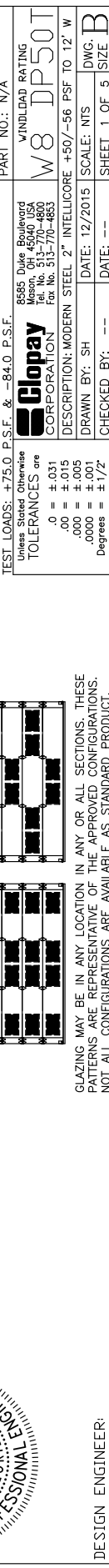
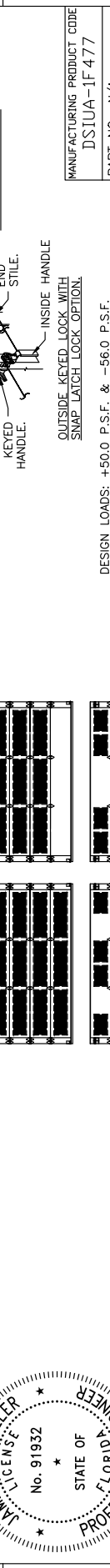
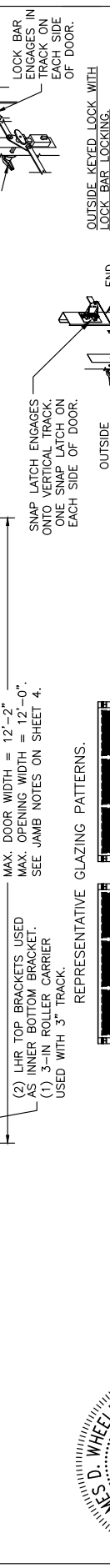
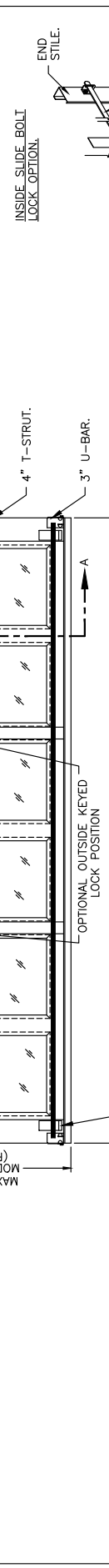
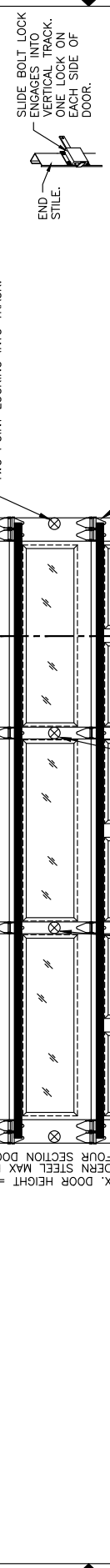
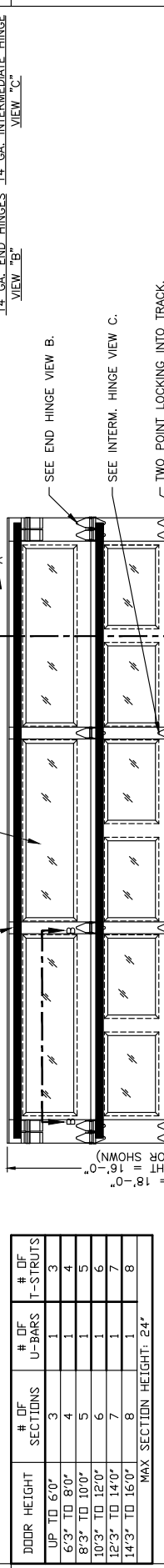
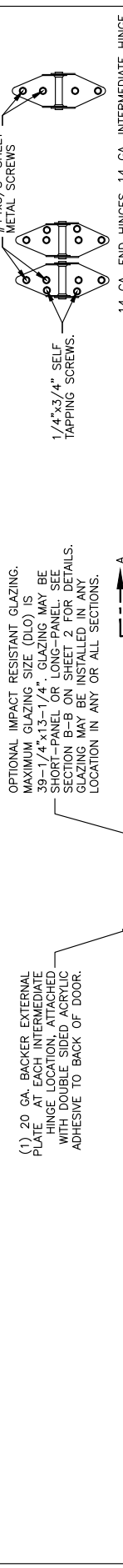


|        |                          |                  |
|--------|--------------------------|------------------|
| BRAND  | MODERN STEEL             | COMMERCIAL DOORS |
|        | FLUSH GROOVED            | FLUSH GROOVED    |
| CLOPAY | 9208, HDPC2 9209, HDPCR2 | 3728 3729        |
| HOLMES | 7208 7209                | -- C7R20         |

|          |      |         |         |          |  |
|----------|------|---------|---------|----------|--|
| REV. NO. | ZONE | DATE    | ECN NO. | APPROV'D | DESCRIPTION                                |
| 02       | -    | 6/14/17 | -       | SH       | ADDED CRM MODELS.                          |
| 03       | -    | 8/6/20  | -       | SH       | UPDATED TITLE BLOCK AND REMOVED WIND CHART |
| 04       | -    | 10/6/25 | -       | DH       | REVISED IMPACT RESISTANT GLAZING DETAILS   |

SEE SHEET 5 FOR "CANYON RIDGE MODERN SERIES" MODELS.

MIXED GLAZING SHOWN.



|   |   |
|---|---|
| DESIGN LOADS: +50.0 P.S.F. & -56.0 P.S.F. | MANUFACTURING PRODUCT CODE                                    |
| TEST LOADS: +75.0 P.S.F. & -84.0 P.S.F.   | DS1UA-1F477   |
| Unless Stated Otherwise                   | PART NO.: N/A   |
| TOLERANCES are                            | WINDLOAD RATING   |
| 0 = ± 0.31                                | W8 DP50T  |
| .00 = ± 0.15                              | DESCRIPTION: MODERN STEEL 2" INTELLICORE +50/-56 PSF TO 12' W |
| .000 = ± 0.005                            | DRAWN BY: SH  |
| .0000 = ± 0.001                           | CHECKED BY: --  |
| Degrees = ± 1/2"                          | DATE: 12/2015   |
| Unless Stated Otherwise                   | SCALE: NTS  |
| DIMENSIONS ARE IN INCHES.                 | DWG. B  |
|   | SHEET 1 OF 5  |
|   | SIZE B  |
|   | VER: IBC  |

2 FLORIDA PRODUCT APPROVAL 16546

| DOOR HEIGHT    | # OF SECTIONS | # OF U-BARS | # OF T-STRUTS |
|----------------|---------------|-------------|---------------|
| UP TO 6'0"     | 3             | 1           | 3             |
| 6'3" TO 8'0"   | 4             | 1           | 4             |
| 8'3" TO 10'0"  | 5             | 1           | 5             |
| 10'3" TO 12'0" | 6             | 1           | 6             |
| 12'3" TO 14'0" | 7             | 1           | 7             |
| 14'3" TO 16'0" | 8             | 1           | 8             |

MAX SECTION HEIGHT: 24'

GLAZING MAY BE IN ANY LOCATION IN ANY OF ALL SECTIONS. THESE PATTERNS ARE REPRESENTATIVE OF THE APPROVED CONFIGURATIONS. NOT ALL CONFIGURATIONS ARE AVAILABLE AS STANDARD PRODUCT. CONSULT FACTORY FOR DETAILS.

REPRESENTATIVE GLAZING PATTERNS.

(2) LHR TOP BRACKETS USED AS INNER BOTTOM BRACKET.  
(1) 3-IN ROLLER CARRIER USED WITH 3" TRACK.

OPTIONAL OUTSIDE KEYED LOCK POSITION  
MAX. DOOR WIDTH = 12'-2"  
MAX. OPENING WIDTH = 12'-0"  
SEE JAMB NOTES ON SHEET 4.

OPTIONAL IMPACT RESISTANT GLAZING. MAXIMUM GLAZING SIZE (BLO) IS 36" X 48". GLAZING MAY BE SECTION PANEL OR PANEL. SEE SECTION B OR SHEET 7 FOR DETAILS. GLAZING MAY BE INSTALLED IN ANY LOCATION IN ANY OR ALL SECTIONS.

(1) 20 GA. BACKER EXTERNAL PLATE AT EACH INTERMEDIATE HINGE LOCATION, ATTACHED WITH DOUBLE SIDED ACRYLIC ADHESIVE TO BACK OF DOOR.

DESIGN ENGINEER:  
JAMES D. WHEELER, P.E.  
FLORIDA LICENSE NO. 91932

DESIGN ENGINEER:  
JAMES D. WHEELER, P.E.  
FLORIDA LICENSE NO. 91932

DESIGN ENGINEER:  
JAMES D. WHEELER, P.E.  
FLORIDA LICENSE NO. 91932

DESIGN ENGINEER:  
JAMES D. WHEELER, P.E.  
FLORIDA LICENSE NO. 91932

DESIGN ENGINEER:  
JAMES D. WHEELER, P.E.  
FLORIDA LICENSE NO. 91932

DESIGN ENGINEER:  
JAMES D. WHEELER, P.E.  
FLORIDA LICENSE NO. 91932

DESIGN ENGINEER:  
JAMES D. WHEELER, P.E.  
FLORIDA LICENSE NO. 91932

DESIGN ENGINEER:  
JAMES D. WHEELER, P.E.  
FLORIDA LICENSE NO. 91932

DESIGN ENGINEER:  
JAMES D. WHEELER, P.E.  
FLORIDA LICENSE NO. 91932

DESIGN ENGINEER:  
JAMES D. WHEELER, P.E.  
FLORIDA LICENSE NO. 91932

DESIGN ENGINEER:  
JAMES D. WHEELER, P.E.  
FLORIDA LICENSE NO. 91932

DESIGN ENGINEER:  
JAMES D. WHEELER, P.E.  
FLORIDA LICENSE NO. 91932

DESIGN ENGINEER:  
JAMES D. WHEELER, P.E.  
FLORIDA LICENSE NO. 91932

DESIGN ENGINEER:  
JAMES D. WHEELER, P.E.  
FLORIDA LICENSE NO. 91932

DESIGN ENGINEER:  
JAMES D. WHEELER, P.E.  
FLORIDA LICENSE NO. 91932

DESIGN ENGINEER:  
JAMES D. WHEELER, P.E.  
FLORIDA LICENSE NO. 91932

DESIGN ENGINEER:  
JAMES D. WHEELER, P.E.  
FLORIDA LICENSE NO. 91932

DESIGN ENGINEER:  
JAMES D. WHEELER, P.E.  
FLORIDA LICENSE NO. 91932

DESIGN ENGINEER:  
JAMES D. WHEELER, P.E.  
FLORIDA LICENSE NO. 91932

DESIGN ENGINEER:  
JAMES D. WHEELER, P.E.  
FLORIDA LICENSE NO. 91932

DESIGN ENGINEER:  
JAMES D. WHEELER, P.E.  
FLORIDA LICENSE NO. 91932

DESIGN ENGINEER:  
JAMES D. WHEELER, P.E.  
FLORIDA LICENSE NO. 91932

DESIGN ENGINEER:  
JAMES D. WHEELER, P.E.  
FLORIDA LICENSE NO. 91932

DESIGN ENGINEER:  
JAMES D. WHEELER, P.E.  
FLORIDA LICENSE NO. 91932

DESIGN ENGINEER:  
JAMES D. WHEELER, P.E.  
FLORIDA LICENSE NO. 91932

DESIGN ENGINEER:  
JAMES D. WHEELER, P.E.  
FLORIDA LICENSE NO. 91932

DESIGN ENGINEER:  
JAMES D. WHEELER, P.E.  
FLORIDA LICENSE NO. 91932

DESIGN ENGINEER:  
JAMES D. WHEELER, P.E.  
FLORIDA LICENSE NO. 91932

DESIGN ENGINEER:  
JAMES D. WHEELER, P.E.  
FLORIDA LICENSE NO. 91932

DESIGN ENGINEER:  
JAMES D. WHEELER, P.E.  
FLORIDA LICENSE NO. 91932

DESIGN ENGINEER:  
JAMES D. WHEELER, P.E.  
FLORIDA LICENSE NO. 91932

DESIGN ENGINEER:  
JAMES D. WHEELER, P.E.  
FLORIDA LICENSE NO. 91932

DESIGN ENGINEER:  
JAMES D. WHEELER, P.E.  
FLORIDA LICENSE NO. 91932

DESIGN ENGINEER:  
JAMES D. WHEELER, P.E.  
FLORIDA LICENSE NO. 91932

DESIGN ENGINEER:  
JAMES D. WHEELER, P.E.  
FLORIDA LICENSE NO. 91932

DESIGN ENGINEER:  
JAMES D. WHEELER, P.E.  
FLORIDA LICENSE NO. 91932

DESIGN ENGINEER:  
JAMES D. WHEELER, P.E.  
FLORIDA LICENSE NO. 91932

DESIGN ENGINEER:  
JAMES D. WHEELER, P.E.  
FLORIDA LICENSE NO. 91932

DESIGN ENGINEER:  
JAMES D. WHEELER, P.E.  
FLORIDA LICENSE NO. 91932

DESIGN ENGINEER:  
JAMES D. WHEELER, P.E.  
FLORIDA LICENSE NO. 91932

DESIGN ENGINEER:  
JAMES D. WHEELER, P.E.  
FLORIDA LICENSE NO. 91932

DESIGN ENGINEER:  
JAMES D. WHEELER, P.E.  
FLORIDA LICENSE NO. 91932

DESIGN ENGINEER:  
JAMES D. WHEELER, P.E.  
FLORIDA LICENSE NO. 91932

DESIGN ENGINEER:  
JAMES D. WHEELER, P.E.  
FLORIDA LICENSE NO. 91932

DESIGN ENGINEER:  
JAMES D. WHEELER, P.E.  
FLORIDA LICENSE NO. 91932

DESIGN ENGINEER:  
JAMES D. WHEELER, P.E.  
FLORIDA LICENSE NO. 91932

DESIGN ENGINEER:  
JAMES D. WHEELER, P.E.  
FLORIDA LICENSE NO. 91932

DESIGN ENGINEER:  
JAMES D. WHEELER, P.E.  
FLORIDA LICENSE NO. 91932

DESIGN ENGINEER:  
JAMES D. WHEELER, P.E.  
FLORIDA LICENSE NO. 91932

DESIGN ENGINEER:  
JAMES D. WHEELER, P.E.  
FLORIDA LICENSE NO. 91932

DESIGN ENGINEER:  
JAMES D. WHEELER, P.E.  
FLORIDA LICENSE NO. 91932

DESIGN ENGINEER:  
JAMES D. WHEELER, P.E.  
FLORIDA LICENSE NO. 91932

DESIGN ENGINEER:  
JAMES D. WHEELER, P.E.  
FLORIDA LICENSE NO. 91932

DESIGN ENGINEER:  
JAMES D. WHEELER, P.E.  
FLORIDA LICENSE NO. 91932

DESIGN ENGINEER:  
JAMES D. WHEELER, P.E.  
FLORIDA LICENSE NO. 91932

DESIGN ENGINEER:  
JAMES D. WHEELER, P.E.  
FLORIDA LICENSE NO. 91932

DESIGN ENGINEER:  
JAMES D. WHEELER, P.E.  
FLORIDA LICENSE NO. 91932

DESIGN ENGINEER:  
JAMES D. WHEELER, P.E.  
FLORIDA LICENSE NO. 91932

DESIGN ENGINEER:  
JAMES D. WHEELER, P.E.  
FLORIDA LICENSE NO. 91932

DESIGN ENGINEER:  
JAMES D. WHEELER, P.E.  
FLORIDA LICENSE NO. 91932

DESIGN ENGINEER:  
JAMES D. WHEELER, P.E.  
FLORIDA LICENSE NO. 91932

DESIGN ENGINEER:  
JAMES D. WHEELER, P.E.  
FLORIDA LICENSE NO. 91932

DESIGN ENGINEER:  
JAMES D. WHEELER, P.E.  
FLORIDA LICENSE NO. 91932

DESIGN ENGINEER:  
JAMES D. WHEELER, P.E.  
FLORIDA LICENSE NO. 91932

DESIGN ENGINEER:  
JAMES D. WHEELER, P.E.  
FLORIDA LICENSE NO. 91932

DESIGN ENGINEER:  
JAMES D. WHEELER, P.E.  
FLORIDA LICENSE NO. 91932

DESIGN ENGINEER:  
JAMES D. WHEELER, P.E.  
FLORIDA LICENSE NO. 91932

DESIGN ENGINEER:  
JAMES D. WHEELER, P.E.  
FLORIDA LICENSE NO. 91932

DESIGN ENGINEER:  
JAMES D. WHEELER, P.E.  
FLORIDA LICENSE NO. 91932

DESIGN ENGINEER:  
JAMES D. WHEELER, P.E.  
FLORIDA LICENSE NO. 91932

DESIGN ENGINEER:  
JAMES D. WHEELER, P.E.  
FLORIDA LICENSE NO. 91932

DESIGN ENGINEER:  
JAMES D. WHEELER, P.E.  
FLORIDA LICENSE NO. 91932

DESIGN ENGINEER:  
JAMES D. WHEELER, P.E.  
FLORIDA LICENSE NO. 91932

DESIGN ENGINEER:  
JAMES D. WHEELER, P.E.  
FLORIDA LICENSE NO. 91932

DESIGN ENGINEER:  
JAMES D. WHEELER, P.E.  
FLORIDA LICENSE NO. 91932

DESIGN ENGINEER:  
JAMES D. WHEELER, P.E.  
FLORIDA LICENSE NO. 91932

DESIGN ENGINEER:  
JAMES D. WHEELER, P.E.  
FLORIDA LICENSE NO. 91932

DESIGN ENGINEER:  
JAMES D. WHEELER, P.E.  
FLORIDA LICENSE NO. 91932

DESIGN ENGINEER:  
JAMES D. WHEELER, P.E.  
FLORIDA LICENSE NO. 91932

DESIGN ENGINEER:  
JAMES D. WHEELER, P.E.  
FLORIDA LICENSE NO. 91932

DESIGN ENGINEER:  
JAMES D. WHEELER, P.E.  
FLORIDA LICENSE NO. 91932

DESIGN ENGINEER:  
JAMES D. WHEELER, P.E.  
FLORIDA LICENSE NO. 91932

DESIGN ENGINEER:  
JAMES D. WHEELER, P.E.  
FLORIDA LICENSE NO. 91932

DESIGN ENGINEER:  
JAMES D. WHEELER, P.E.  
FLORIDA LICENSE NO. 91932

DESIGN ENGINEER:  
JAMES D. WHEELER, P.E.  
FLORIDA LICENSE NO. 91932

DESIGN ENGINEER:  
JAMES D. WHEELER, P.E.  
FLORIDA LICENSE NO. 91932

DESIGN ENGINEER:  
JAMES D. WHEELER, P.E.  
FLORIDA LICENSE NO. 91932

DESIGN ENGINEER:  
JAMES D. WHEELER, P.E.  
FLORIDA LICENSE NO. 91932

DESIGN ENGINEER:  
JAMES D. WHEELER, P.E.  
FLORIDA LICENSE NO. 91932

DESIGN ENGINEER:  
JAMES D. WHEELER, P.E.  
FLORIDA LICENSE NO. 91932

DESIGN ENGINEER:  
JAMES D. WHEELER, P.E.  
FLORIDA LICENSE NO. 91932

DESIGN ENGINEER:  
JAMES D. WHEELER, P.E.  
FLORIDA LICENSE NO. 91932

DESIGN ENGINEER:  
JAMES D. WHEELER, P.E.  
FLORIDA LICENSE NO. 91932

DESIGN ENGINEER:  
JAMES D. WHEELER, P.E.  
FLORIDA LICENSE NO. 91932

DESIGN ENGINEER:  
JAMES D. WHEELER, P.E.  
FLORIDA LICENSE NO. 91932

DESIGN ENGINEER:  
JAMES D. WHEELER, P.E.  
FLORIDA LICENSE NO. 91932

DESIGN ENGINEER:  
JAMES D. WHEELER, P.E.  
FLORIDA LICENSE NO. 91932

DESIGN ENGINEER:  
JAMES D. WHEELER, P.E.  
FLORIDA LICENSE NO. 91932

DESIGN ENGINEER:  
JAMES D. WHEELER, P.E.  
FLORIDA LICENSE NO. 91932

DESIGN ENGINEER:  
JAMES D. WHEELER, P.E.  
FLORIDA LICENSE NO. 91932

DESIGN ENGINEER:  
JAMES D. WHEELER, P.E.  
FLORIDA LICENSE NO. 91932

DESIGN ENGINEER:  
JAMES D. WHEELER, P.E.  
FLORIDA LICENSE NO. 91932

DESIGN ENGINEER:  
JAMES D. WHEELER, P.E.  
FLORIDA LICENSE NO. 91932

DESIGN ENGINEER:  
JAMES D. WHEELER, P.E.  
FLORIDA LICENSE NO. 91932

DESIGN ENGINEER:  
JAMES D. WHEELER, P.E.  
FLORIDA LICENSE NO. 91932

DESIGN ENGINEER:  
JAMES D. WHEELER, P.E.  
FLORIDA LICENSE NO. 91932

DESIGN ENGINEER:  
JAMES D. WHEELER, P.E.  
FLORIDA LICENSE NO. 91932

DESIGN ENGINEER:  
JAMES D. WHEELER, P.E.  
FLORIDA LICENSE NO. 91932

DESIGN ENGINEER:  
JAMES D. WHEELER, P.E.  
FLORIDA LICENSE NO. 91932

DESIGN ENGINEER:  
JAMES D. WHEELER, P.E.  
FLORIDA LICENSE NO. 91932

DESIGN ENGINEER:  
JAMES D. WHEELER, P.E.  
FLORIDA LICENSE NO. 91932

DESIGN ENGINEER:  
JAMES D. WHEELER, P.E.  
FLORIDA LICENSE NO. 91932

DESIGN ENGINEER:  
JAMES D. WHEELER, P.E.  
FLORIDA LICENSE NO. 91932

DESIGN ENGINEER:  
JAMES D. WHEELER, P.E.  
FLORIDA LICENSE NO. 91932

DESIGN ENGINEER:  
JAMES D. WHEELER, P.E.  
FLORIDA LICENSE NO. 91932

DESIGN ENGINEER:  
JAMES D. WHEELER, P.E.  
FLORIDA LICENSE NO. 91932

DESIGN ENGINEER:  
JAMES D. WHEELER, P.E.  
FLORIDA LICENSE NO. 91932

DESIGN ENGINEER:  
JAMES D. WHEELER, P.E.  
FLORIDA LICENSE NO. 91932

DESIGN ENGINEER:  
JAMES D. WHEELER, P.E.  
FLORIDA LICENSE NO. 91932

DESIGN ENGINEER:  
JAMES D. WHEELER, P.E.  
FLORIDA LICENSE NO. 91932

DESIGN ENGINEER:  
JAMES D. WHEELER, P.E.  
FLORIDA LICENSE NO. 91932

DESIGN ENGINEER:  
JAMES D. WHEELER, P.E.  
FLORIDA LICENSE NO. 91932

DESIGN ENGINEER:  
JAMES D. WHEELER, P.E.  
FLORIDA LICENSE NO. 91932

DESIGN ENGINEER:  
JAMES D. WHEELER, P.E.  
FLORIDA LICENSE NO. 91932

DESIGN ENGINEER:  
JAMES D. WHEELER, P.E.  
FLORIDA LICENSE NO. 91932

DESIGN ENGINEER:  
JAMES D. WHEELER, P.E.  
FLORIDA LICENSE NO. 91932

DESIGN ENGINEER:  
JAMES D. WHEELER, P.E.  
FLORIDA LICENSE NO. 91932

DESIGN ENGINEER:  
JAMES D. WHEELER, P.E.  
FLORIDA LICENSE NO. 91932

DESIGN ENGINEER:  
JAMES D. WHEELER, P.E.  
FLORIDA LICENSE NO. 91932

DESIGN ENGINEER:  
JAMES D. WHEELER, P.E.  
FLORIDA LICENSE NO. 91932

DESIGN ENGINEER:  
JAMES D. WHEELER, P.E.  
FLORIDA LICENSE NO. 91932

DESIGN ENGINEER:  
JAMES D. WHEELER, P.E.  
FLORIDA LICENSE NO. 91932

DESIGN ENGINEER:  
JAMES D. WHEELER, P.E.  
FLORIDA LICENSE NO. 91932

DESIGN ENGINEER:  
JAMES D. WHEELER, P.E.  
FLORIDA LICENSE NO. 91932

DESIGN ENGINEER:  
JAMES D. WHEELER, P.E.  
FLORIDA LICENSE NO. 91932

DESIGN ENGINEER:  
JAMES D. WHEELER, P.E.  
FLORIDA LICENSE NO. 91932

DESIGN ENGINEER:  
JAMES D. WHEELER, P.E.  
FLORIDA LICENSE NO. 91932

DESIGN ENGINEER:  
JAMES D. WHEELER, P.E.  
FLORIDA LICENSE NO. 91932

DESIGN ENGINEER:  
JAMES D. WHEELER, P.E.  
FLORIDA LICENSE NO. 91932

DESIGN ENGINEER:  
JAMES D. WHEELER, P.E.  
FLORIDA LICENSE NO. 91932

DESIGN ENGINEER:  
JAMES D. WHEELER, P.E.  
FLORIDA LICENSE NO. 91932





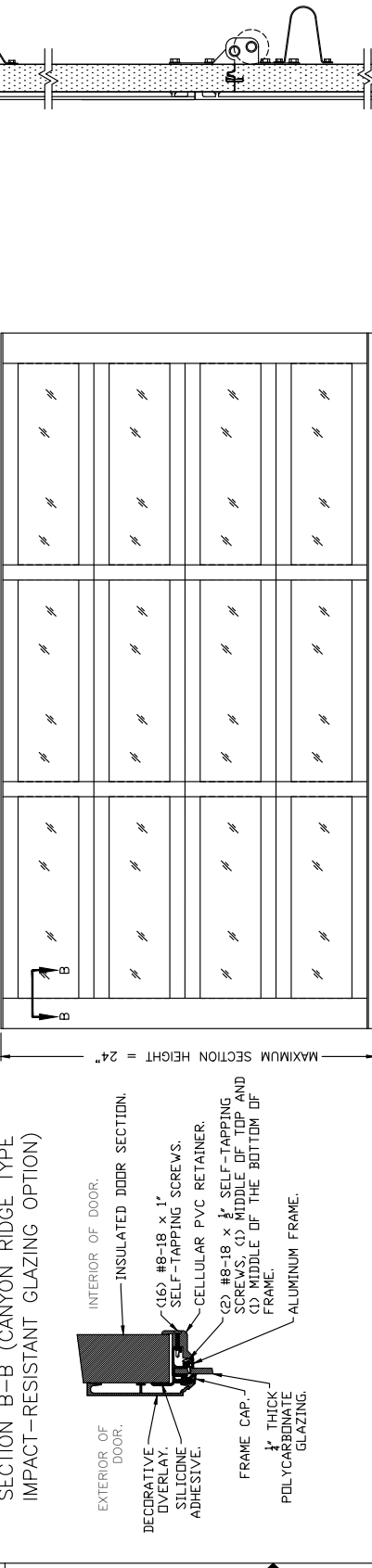


|  |      |           |         |             |                                    |
|--|------|-----------|---------|-------------|------------------------------------|
| CLOPAY 'CANYON RIDGE MODERN SERIES': CRM2nnn |      | REVISIONS |         | DESCRIPTION |                                    |
| REV. NO.                                     | ZONE | DATE      | ECN NO. | APPVD:      | SEE REVISION HISTORY ON SHEET ONE. |
| 04   |      |           |         |             |                                    |
| SHEET: 5 OF 5                                |      |           |         |             |                                    |

HOLMES 'GLENMOOR MODERN SERIES': GLM2nnn  
 IDEAL 'CUSTOM CRAFTED MODERN WOOD-LOOK' SERIES: WLM2nnn

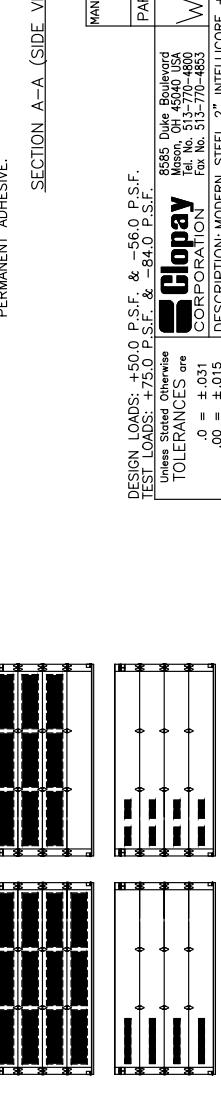
NOTE: "nnn" REPRESENTS THE ARRANGEMENT OF THE DECORATIVE OVERLAYS. DOORS MAY HAVE 'PLANK' APPEARANCE, ALUMINUM INLAYS, OR "FULL VISION".

SECTION B-B (CANYON RIDGE TYPE IMPACT-RESISTANT GLAZING OPTION)



"CANYON RIDGE" TYPE OVERLAY DOORS

NOTES:  
 1. "CANYON RIDGE" TYPE DOORS USE THE SAME REINFORCEMENTS AND BASE SECTION CONSTRUCTION AND TRACK CONFIGURATION DESCRIBED ON SHEETS 1-4 OF THIS DRAWING.  
 2. CANYON RIDGE TYPE DOORS ARE IMPACT RESISTANT WITH IMPACT RESISTANT GLAZING AND FRAME AS SHOWN IN DETAIL B-B ABOVE.

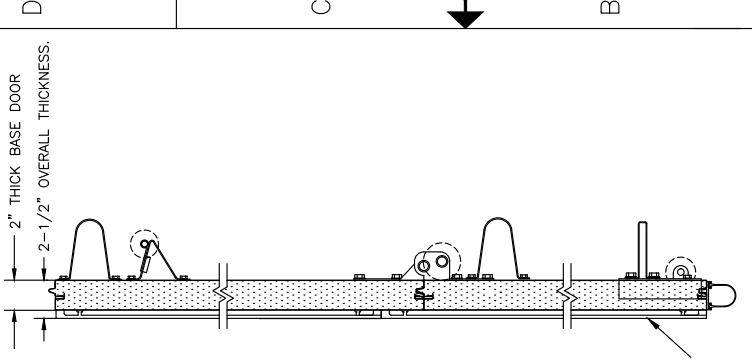


GLAZING MAY BE IN ANY LOCATION IN ANY OF ALL SECTIONS. THESE PATTERNS ARE REPRESENTATIVE OF THE APPROVED CONFIGURATIONS. NOT ALL CONFIGURATIONS ARE AVAILABLE AS STANDARD PRODUCT. CONSULT FACTORY FOR DETAILS.

DESIGN ENGINEER:  
 JAMES D. WHEELER, P.E.  
 FLORIDA LICENSE No. 91932

FULL VISION GLAZING SHOWN.

OPTIONAL GLAZING IS IMPACT RESISTANT GLAZING. MAXIMUM GLAZING SIZE (DLO) IS 50-1/4" x 13-1/4". GLAZING MAY BE FINISH SURFACE OR PLANK OR DMC-PLANK. SEE SECTION B-B ON SHEET 5 FOR IMPACT RESISTANT DETAILS OR SECTION B-B ON SHEET 2 FOR STANDARD CONSTRUCTION. GLAZING MAY BE INSTALLED IN ANY LOCATION IN ANY OR ALL SECTIONS.



SECTION A-A (SIDE VIEW)

|   |   |
|---|---|
| DESIGN LOADS: +50.0 P.S.F. & -56.0 P.S.F. | MANUFACTURING PRODUCT CODE                                    |
| TEST LOADS: +75.0 P.S.F. & -84.0 P.S.F.   | DS1UA-1F477   |
| Unless Stated Otherwise                   | PART NO.: N/A   |
| TOLERANCES are                            | WINDLOAD RATING   |
| 0 = ± 0.31                                | W8 DP50T  |
| .00 = ± 0.15                              | DESCRIPTION: MODERN STEEL 2" INTELLICORE +50/-56 PSF TO 12' W |
| .000 = ± 0.005                            | DRAWN BY: SH  |
| .0000 = ± 0.001                           | CHECKED BY: --  |
| Degrees = ± 1/2"                          | DATE: 12/2015   |
| Unless Stated Otherwise                   | SCALE: NTS  |
| DIMENSIONS ARE IN INCHES.                 | SHEET 5 OF 5  |
|   | SIZE: B   |
|   | VER: IBC  |

2 FLORIDA PRODUCT APPROVAL 16546

February 16, 2016 (revised 10/21/25)

Evaluation Report for Clopay Corporation Modern Steel Full Vision Sectional Garage Doors, W4 and Modern Steel Impact Resistant Full Vision Sectional Garage Doors, W4 W6 and W8

I have evaluated the wind load door designs as shown on the drawings listed below. I have reviewed the test reports, which were generated by accredited laboratories as required by the relevant Florida Administrative Rule, the engineering rational analysis, and the product drawings. The test reports are listed below. Assembly testing was conducted by American Test Lab North Carolina and CBPC-ATC. Component testing was conducted by HETI and ETC.

For the doors listed in Tables 1 and 2, Static Pressure Tests were conducted in accordance with TAS 202-1994, ASTM-E330-2002 and ANSI/DASMA 108-2005. Missile Impact and Cyclic Pressure Tests were conducted in accordance with TAS 201-1994 and TAS 203-1994 and ASTM E1886-2005 and ASTM E1996-2009 and ANSI/DASMA 115-2005. The pressures listed on the drawings are either direct results of these tests or results obtained through engineering rational analysis based on actual tests. I have concluded that the sectional garage door designs listed below in Tables 1 and 2 are in compliance with the High Velocity Hurricane Zone test requirements of the Florida Building Code and therefore are qualified as impact-resistant assemblies (large missile impact).

**TABLE 1: Drawings for doors with Manufacturing Product Code (MPC) DSIUA-1F477:**

|                 |                               |                           |
|-----------------|-------------------------------|---------------------------|
| 104859-A-Rev03, | max. door size 9'0" x 18'0";  | +38/-42 PSF (design load) |
| 105042-A-Rev03, | max. door size 16'2" x 18'0"; | +38/-42 PSF (design load) |
| 105188-A-Rev02, | max. door size 18'2" x 18'0"; | +38/-42 PSF (design load) |
| 105024-Rev03,   | max. door size 9'0" x 18'0";  | +54/-60 PSF (design load) |
| 105050-Rev03,   | max. door size 12'2" x 18'0"; | +50/-56 PSF (design load) |
| 105019-Rev03,   | max. door size 14'2" x 18'0"; | +46/-52 PSF (design load) |
| 105002-Rev03,   | max. door size 16'2" x 18'0"; | +46/-52 PSF (design load) |

**TABLE 2: Drawings for doors with Manufacturing Product Code (MPC) DSIE-1F171:**

|                 |                               |                           |
|-----------------|-------------------------------|---------------------------|
| 104943-A-Rev02, | max. door size 20'2" x 18'0"; | +37/-40 PSF (design load) |
|-----------------|-------------------------------|---------------------------|

For the doors in Tables 3 and 4, Static Pressure Tests were conducted in accordance with ASTM-E330-2002 and ANSI/DASMA 108-2005. The pressures listed on the drawings are either direct results of these tests or results obtained through engineering rational analysis based on actual tests. I have concluded that the sectional garage door designs listed below in Tables 3 and 4 are in compliance with the wind load test requirements of the Florida Building Code.

**TABLE 3: Drawings for doors with Manufacturing Product Code (MPC) DSIUA-1F477:**

|                 |                               |                           |
|-----------------|-------------------------------|---------------------------|
| 105868-Rev00,   | max. door size 9'2" x 20'0";  | +25/-25 PSF (design load) |
| 105898-Rev00,   | max. door size 16'2" x 20'0"; | +26/-28 PSF (design load) |
| 105847-Rev00,   | max. door size 18'2" x 20'0"; | +25/-25 PSF (design load) |
| 105894-Rev00,   | max. door size 20'2" x 20'0"; | +25/-25 PSF (design load) |
| 104859-B-Rev03, | max. door size 9'0" x 18'0";  | +38/-42 PSF (design load) |

105042-B-Rev03, max. door size 16'2" x 18'0"; +38/-42 PSF (design load)  
105188-B-Rev02, max. door size 18'2" x 18'0"; +38/-42 PSF (design load)

**TABLE 4:** Drawings for doors with Manufacturing Product Code (MPC) DSIE-1F171:  
104943-B-Rev02, max. door size 20'2" x 18'0"; +37/-40 PSF (design load)

### **Test Reports:**

The following test reports are based on testing conducted by American Test Lab at their North Carolina Facility: 0223.01-15R (04/16/15), 0727.01-15 (08/11/15), 0824.02-15 (09/01/15), 0824.01-15 (09/01/15), 0514.01-15 (05/27/15), 0330.01-15 (04/16/15), 1214.01-15 (02/05/16), 1213.01-16 (12/21/16), 0909.01-25 (10/15/25). These reports document compliance with the TAS testing standards and are signed and sealed by David Johnson, FL PE 61915.

The following test reports are based on testing conducted by Clopay Building Products at their Mason testing facility (accredited by ANAB for ASTM E330 and ANSI/DASMA 108 testing): CBPC-ATC 14-032 (01/16/15), 14-015 (7/17/14), 15-016 (07/17/15), 16-019 (108-16), 16-018 (2/14/23), 22-001 (2/14/23), 22-028 (2/14/23), and 22-029 (2/14/23).

### **Product Description for doors with MPC DSIUA-1F477:**

These doors consist of 2" double-skin insulated sections with polyurethane insulation foamed in place between both skins. Both inner and outer skins are min. 27 ga. (0.016") G40 DDS per ASTM A653. The maximum section height is 24". Glazing is permitted in any or all panels in any or all sections. These sections may have optional decorative overlays. These doors may have optional Impact-Resistant Glazing (Aluminum). Optional Impact-Resistant Glazing is an aluminum front frame and a separate polycarbonate glazing. The following models are at least structurally equivalent to the tested door: 9208, 9209, HDPC2, HDPCR2, 7208, 7209, 3728, 3729, C7R20. The following "Canyon Ridge Modern Series" models have optional decorative overlays and are at least structurally equivalent to the tested door: Canyon Ridge Modern Series CRM2nnn, Glenmoor Modern GLM2nnn, Custom Wood-Look Modern WLM2nnn. Note that 'nnn' represents the type and arrangement of the decorative overlays. Not all models may be shown on a given drawing.

### **Product Description for doors with MPC DSIE-1F171:**

These doors consist of 2" double-skin insulated sections with an EPS core laminated to both skins. Both inner and outer skins are min. 27 ga. (0.016") G40 DDS per ASTM A653. The maximum section height is 21". These doors may have optional Impact-Resistant Glazing (Molded). Optional Impact-Resistant Glazing is a one-piece injection-molded front frame and glazing. The following models are at least structurally equivalent to the tested door: 4300, 4301, 4310, HDG, HDGL, HDGF, 66, 66G, 67, 67G, 68, 6200, 6201, 6203, SP200, SF200, SE200. Not all models may be shown on a given drawing.

### **Impact Resistant Glazing (Aluminum):**

The optional impact resistant glazing consists of an aluminum front frame and aluminum interior retainer encasing a polycarbonate glazing that is an approved C1 plastic in accordance with testing required by FBC-B 2606 and complies with FBC-B

2615 testing requirements. Approved polycarbonate materials are Sabic IP Lexan 9034 (versions also approved: MR10, XL-10) and Plaskolite TUFFAK AR (TUFFAK versions also approved: SL, GP). Approval based on review of NOA 24-1023.03 (Sabic) and NOA 24-0205.09 (Plaskolite) and manufacturer's product datasheets.

Impact Resistant Glazing (Molded):

The optional impact resistant glazing is an injection-molded polycarbonate front frame and glazing (LEXAN SLX2432T) that is an approved C1 plastic in accordance with testing required by FBC-B 2606. FBC-B 2615 compliance based on review of the following tests:

HETI-06-A002 ASTM G155; HETI-06-T566 ASTM D638 (before); HETI-06-T634 ASTM D638 (after); ETC-06-1024-17496.0 ASTM D2843, ASTM D635, ASTM D1929.

Non-Impact Resistant Glazing:

The optional non-impact resistant glazing is a screw-together plastic frame and a separate glass glazing in compliance with the ASTM E1300 requirements of FBC-B Section 2404.

Limitations:

The drawing(s) cited above are an explicit part of this evaluation report. The text of this report does not attempt to address all design details and relies on the illustrations and text of these drawings as well.

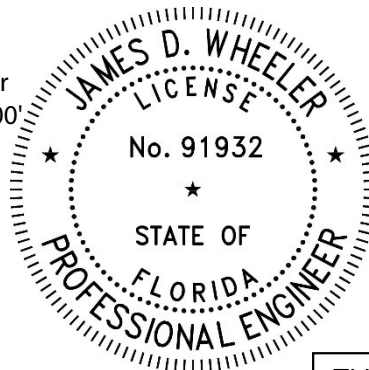
Jambs, lintels, sills or other structural elements required to prepare openings are not covered. The design of the supporting structural elements shall be the responsibility of the professional of record for the building or structure and in accordance with current building codes for the loads listed on the drawing(s) referenced above.

Installation requirements per the relevant Florida Administrative Rule, including attachments, are detailed on the drawing(s) listed above. Installation must be in accordance with manufacturer's installation instructions and must be as shown on the drawing(s) listed above. The manufacturer's licensed design professional listed on the drawing(s) has reviewed the attachment details and installation requirements.

Signature:

Digitally signed by Jim Wheeler  
Date: 2025.10.21 09:50:52 -04'00'

James D. Wheeler, P.E.  
Florida P.E. #91932  
Senior Project Engineer  
Clipay Corporation



This document has been digitally signed and is valid without a physical signature. Third-party verification embedded in the PDF can attest that the document has not been changed since it was signed. The printed document is just a copy and cannot be verified.